



Supervisory Pressure Switches

Fig. RDEPS120-1 and RDEPS120-2

General Description

RDEPS120 Series switches are designed to supervise system air pressure in pipes or pressure tanks, as well as water or air pressure supplies of automatic water control valves.

Features

- **Adjustable Sensitivity:** Field-adjustable pressure sensitivity ensures a customizable alarm response, ranging from 0.7 to 13.8 bar (10 to 200 psi).
- **Activation Mechanism:** Activated by the factory pre-set pressure of 7.2 bar (105 psi) at decreasing pressure for RDEPS120-1 or 8.6 bar (125 psi) on rising pressure and 7.2 bar (105 psi) decreasing pressure for RDEPS120-2.
- **Model Options:** The RDEPS120-1 features a single SPDT switch, while the RDEPS120-2 model includes two SPDT switches, each with contacts rated at 10.0 Amp @ 125/250 VAC and 2.5 Amp @ 6/12/24 VDC.
- **Easy Adjustment:** The pressure adjustment wheel requires no special tools and ensures switch synchronization, excluding the RDEPS40-2.
- **Installation:** Equipped with a 1/2" NPT male connection, these switches seamlessly connect to the alarm valve of wet systems, the intermediate chamber of dry systems, or pre-action/deluge valves.
- **Conduit Fitting Attachment:** Features 1 knockout type and 1 open hole for 1/2" conduit fitting attachment.
- **Grounding Provision:** Includes a ground screw provision for electrical grounding.
- **Weatherproof Enclosure:** The switch enclosure is weatherproof and carries a UL 4x/NEMA 4 rating when used with proper electrical fittings and conduit.
- **Tamper-Resistant:** The cover is equipped with tamper-resistant screws.

Approvals

FM Approved
UL Listed



Specification

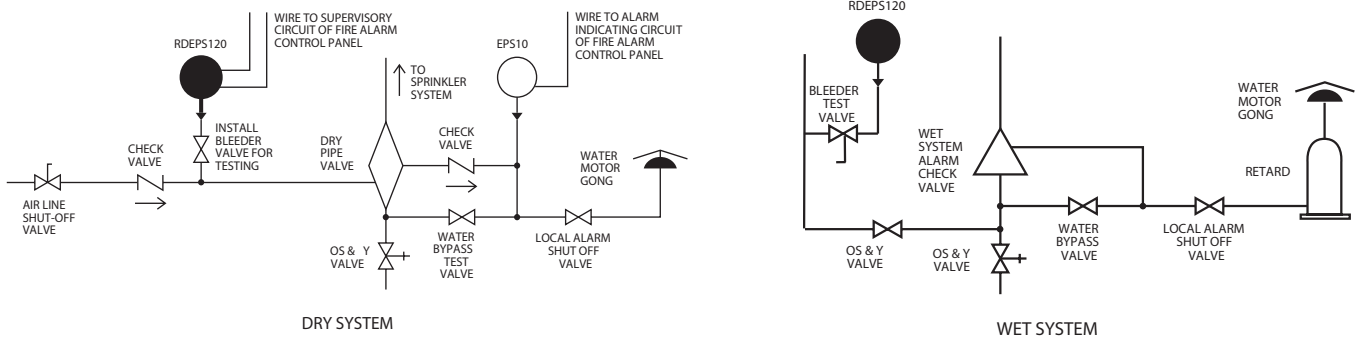
Maximum Working Pressure	20.7 bar (300 psi)
Maximum Adjustment Pressure Range	0.7 to 13.8 bar (10 to 200 psi)
Differential	Approximately 0.2 bar (3 psi) @ 0.7 bar (10 psi), 0.6bar (9 psi) @ 13.8 bar (200psi)
Factory Setting	RDEPS120-1 operates at decreasing pressure at 105 psi RDEPS120-2 operates at increasing pressure at 125 psi and decreasing pressure at 105 psi
Switch Contact Ratings	RDEPS120-1: One set SPDT (Form C) RDEPS120-2: Two sets SPDT (Form C) 10.0 A, 1/2 HP @ 125/250 VAC 2.5 A @ 6/12/24 VDC
Pressure Connection	1/2" NPT male glass reinforced nylon
Dimensions	130 × 84 × 108 mm (5.12" H × 3.325" W × 4.250" L)
Operating Temperature Range	Indoor or outdoor use: -40°C to 71°C (-40°F to 160°F)
Enclosure	Rated UL 4x, NEMA 4 for indoor or outdoor use
Shipping Weight	0.54 Kg (1.2 lbs.)
Service Use	Automatic Sprinkler: NFPA 13 One or Two Family Dwelling: NFPA 13D Residential Occupancies up to 4 Stories: NFPA 13R National Fire Alarm Code: NFPA 72



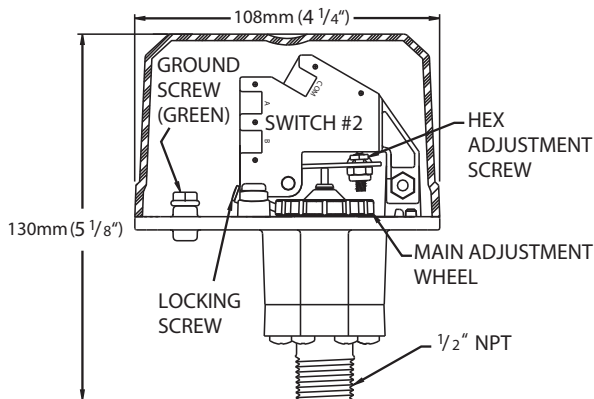
Supervisory Pressure Switches

Fig. RDEPS120-1 and RDEPS120-2

Typical Sprinkler Applications



Pressure Switch Basic Dimensions



Electrical Connections

