



# Supervisory Pressure Switches

## Fig. RDEPS40-1 and RDEPS40-2

### General Description

RDEPS40 Series pressure switches are designed for use in dry pipe systems or pressure tanks and water pressure supplies of automatic water control valves.

### Features

- **Adjustable Sensitivity:** Field-adjustable pressure sensitivity ensures a customizable alarm response, ranging from 0.7 to 6.8 bar (10 to 100 psi).
- **Activation Mechanism:** Activated by the factory pre-set pressure of 2 bar (30 psi) at decreasing pressure for RDEPS40-1 or 3.4 bar (50 psi) on rising pressure and 2 bar (30 psi) decreasing pressure for RDEPS40-2.
- **Model Options:** The RDEPS40-1 features a single SPDT switch, while the RDEPS40-2 model includes two SPDT switches, each with contacts rated at 10.0 Amp @ 125/250 VAC and 2.5 Amp @ 6/12/24 VDC.
- **Easy Adjustment:** The pressure adjustment wheel requires no special tools and ensures switch synchronization, excluding the RDEPS40-2.
- **Installation:** Equipped with a 1/2" NPT male connection, these switches seamlessly connect to the alarm valve of wet systems, the intermediate chamber of dry systems, or pre-action/deluge valves.
- **Conduit Fitting Attachment:** Features 1 knockout type and 1 open hole for 1/2" conduit fitting attachment.
- **Grounding Provision:** Includes a ground screw provision for electrical grounding.
- **Weatherproof Enclosure:** The switch enclosure is weatherproof and carries a UL 4x/NEMA 4 rating when used with proper electrical fittings and conduit.
- **Tamper-Resistant:** The cover is equipped with tamper-resistant screws.

### Approvals

FM Approved  
UL Listed



### Specification

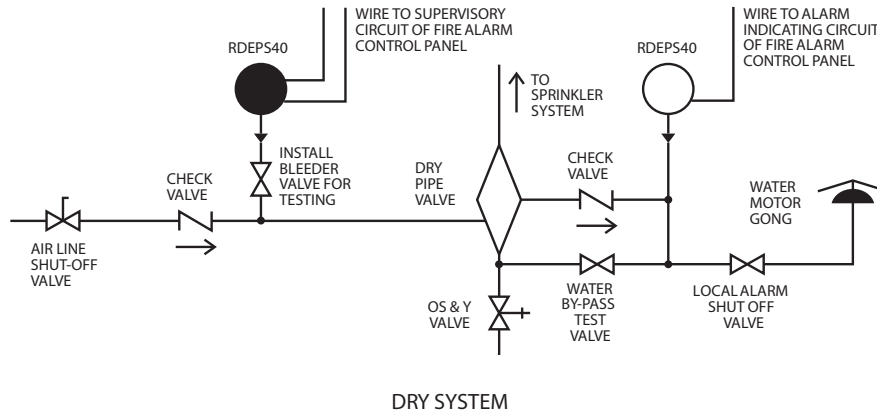
Maximum Working Pressure	20.7 bar (300 psi)
Maximum Adjustment Pressure Range	0.7 to 6.8 bar (10 to 100 psi)
Differential	Approximately 0.2 bar (3 psi) @ 0.7 bar (10 psi) 0.4bar (6 psi) @ 6.8 bar (100psi)
Factory Setting	RDEPS40-1 operates at decreasing pressure at 30 psi RDEPS40-2 operates at increasing pressure at 50 psi and decreasing pressure at 30 psi
Switch Contact Ratings	RDEPS40-1: One set SPDT (Form C) RDEPS40-2: Two sets SPDT (Form C) 10.0 A, 1/2 HP @ 125/250 VAC 2.5 A @ 6/12/24 VDC
Pressure Connection	1/2" NPT male glass reinforced nylon
Dimensions	130 × 84 × 108 mm (5.12" H × 3.325" W × 4.250" L)
Operating Temperature Range	Indoor or outdoor use: -40°C to 71°C (-40°F to 160°F)
Enclosure	Rated UL 4x, NEMA 4 for indoor or outdoor use
Shipping Weight	0.54 Kg (1.2 lbs.)
Service Use	Automatic Sprinkler: NFPA 13 One or Two Family Dwelling: NFPA 13D Residential Occupancies up to 4 Stories: NFPA 13R National Fire Alarm Code: NFPA 72



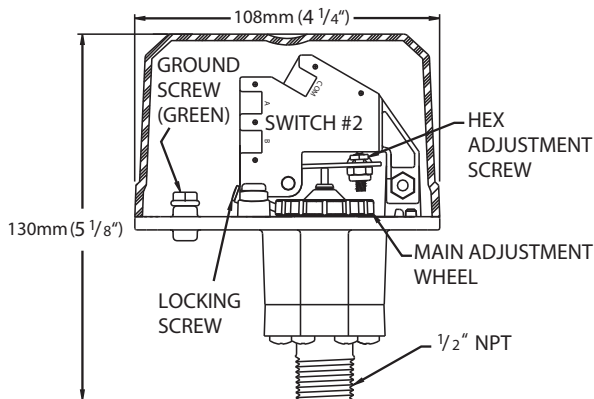
# Supervisory Pressure Switches

## Fig. RDEPS40-1 and RDEPS40-2

### Typical Sprinkler Applications



### Pressure Switch Basic Dimensions



### Electrical Connections

