



Sprinkler Pressure Gauge

Model: PFE

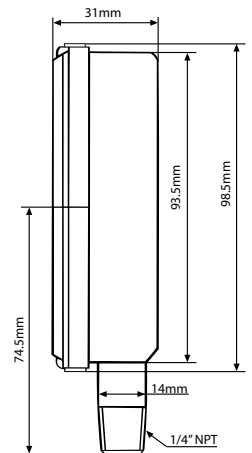
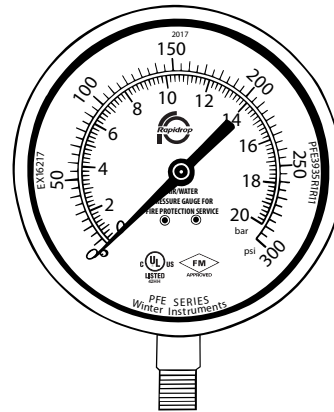
Features

- Specially designed for fire sprinkler systems
- Suitable for air and water media
- Corrosion resistant case
- Dual Scale (bar/psi) pressure ratings
- Approved by Factory Mutual (FM) and listed by Underwriter Laboratory (UL-393), USA and Canada
- Internal pointer travel over-stop
- 5 years warranty



Specification

Dial	3.5" (90mm), white aluminum with black and red markings
Case	Black plastic
Lens	Polycarbonate, threaded
Socket	Brass
Connection	1/4" NPT standard, bottom
Bourdon Tube	Phosphor bronze
Movement	Brass
Pointer	Aluminum, black
Welding	Silver Alloy
Working Pressure	Maximum 75% of full scale value
Ambient/Process Temperature	-40°C to 65°C (-40°F to 150°F)
Accuracy	3-2-3% ASME Grade B
Enclosure Rating	IP52



Important Installation Information

- *Gauges* must only be installed by a competent person in accordance with requirements of the local authority having jurisdiction. Deviations from these standards will invalidate warranty.
- It is the responsibility of the installing contractor to include a copy of this document in the sprinkler system installation, operating and maintenance manual.
- Alterations to products will void any warranty.
- *Gauges* should be inspected and maintained during routine sprinkler system inspections by a competent person in accordance with national codes/requirements.
- Failure to follow these instructions could cause improper operation, resulting in personal injury and/or property damage.
- For further details and technical support please contact your Rapidrop sales representative.

Manufactured by Winters Instruments who hold the FM Approval and UL Listing

DS: 6.14
Issue A
18/04/18
© 2018 Rapidrop

Rapidrop Global Ltd
T: +44 (0) 1733 847 510 F: +44 (0) 1733 553 958
e: rapidrop@rapidrop.com
w: www.rapidrop.com