



Split Grooved-Flange Adaptor PN16 Model DRG004

General Description

Split Flanged - These fittings join pipe, valves or fittings having equal diameters

Material Specification

Cast Iron

Finish

Galvanised

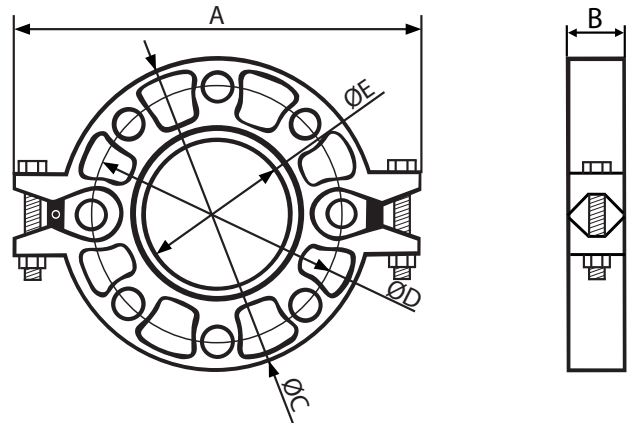
Working Pressure

Max. Working Pressure 20.7 bar (300 psi)

Gasket Specification

- EPDM

Temperature range -34°C to +110°C (-30°C to +230°F). Recommended for hot water service within specified temperature range plus a variety of diluted acids, oil free air and many chemical services. Not recommended for petroleum service.



Model Number (Galvanised)	Nominal Size mm/in	Pipe O.D mm/in	Max. Working Pressure bar/psi	Dimensions				
				A mm/in	B mm/in	C mm/in	D mm/in	E mm/in
RDDRG004	100 4"	114.3 4.5"	20.7 300	280 11.02"	23 0.90"	220 8.66"	180 7.08"	110 4.33"

Manufactured by Weifang 100Tong Casting Co. Ltd. who hold the FM Approval and UL Listing

DS: 10.48
Issue A
19/01/2021
© 2021 Rapidrop

Rapidrop Global Ltd
T: +44 (0) 1733 847 510 F: +44 (0) 1733 553 958
e: rapidrop@rapidrop.com
w: www.rapidrop.com



Split Grooved-Flange Adaptor PN16 Model DRG004



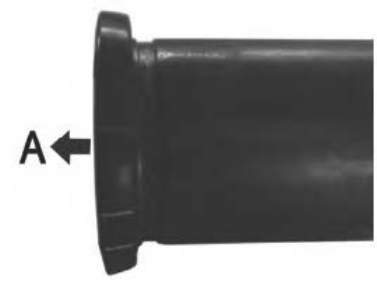
1. Pipe Preparation

Check pipe end for proper groove dimensions and to assure that pipe end is free of indentations and projections that would prevent proper sealing.



2. Lubricate Gasket

Check gasket to be sure it's compatible for the intended service. Apply thin lubricant to the outside and sealing lips of the gasket.



3. Gasket Installation

Slip the gasket over pipe end, with the gasket opening side towards "A". Make sure the gasket sealing lip is even with pipe end.



4. Housing Installation

Remove bolts and nuts, place two housings over the gasket, making sure the housing keys fit into the pipe grooves. Re-insert the bolts and hand tighten the nuts.



5. Tighten Nuts

Securely tighten nuts alternatively and equally using spanner.



6. Connect Mating Flange

Align flange bolt holes with mating flange (or valve) bolt holes. Insert a standard flange bolt through bolt hole and hand tighten a nut. Insert another bolt opposite the first and hand tighten a nut. Continue this until all bolt holes are fitted. Tighten nuts evenly so flange faces remain parallel. Assembly completed.